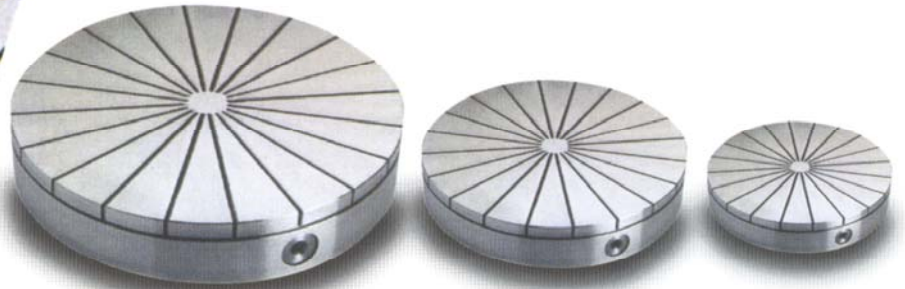


Circular permanent magnetic chucks with radial poles for grinding and turning



- Double pack of Neodymium magnets provides high holding power
- Symmetrical and balanced design allows high turning speeds
- Adjustable holding force for easy workpiece alignment
- Possibility to machine centre through bore

Designed to hold ring shaped components.

To accommodate driving pins, stops or pole shoes all steel poles can be machined. Please consult us for details.

For repetitive work additional top plates can be purchased.

Maximum size of centre through bore according to B.

Standard execution without through bore.

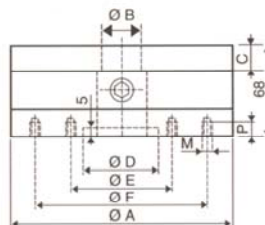
Usable top plate life: Size 130, 3 mm, other sizes 7 mm.

Nominal holding force: 100 N/cm²

Special executions with reinforced top plate and/or T-nuts or grooves in the top plate available on request.

Code	A mm	B mm	C mm	H mm	D H7 mm	E/F mm	MxP mm	Poles	Weight kg nett
32.00.913	130	22	13	58	50	100	M6x10 (4)	8	5.7
37.00.150	150	20	20	68	50	80/120	M6x10 (8)	10	7
37.00.200	200	25	20	68	60	110/180	M6x12 (8)	12	13
37.00.250	250	30	20	68	60	140/220	M6x12 (8)	16	20
37.00.300	300	30	20	68	80	180/260	M8x16 (8)	16	30
37.00.350	350	36	20	68	80	220/300	M8x16 (8)	20	45

Alterations reserved



WALKER
WALKER
MAGNETICS